

# Quick facts about Sysmex Europe



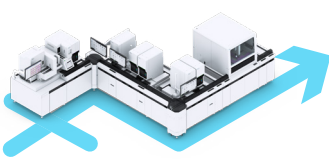
First established in **1980**  
in **Hamburg, Germany**.



We serve our stakeholders  
across the EMEA  
(Europe, Middle East and Africa)  
region via more than **30 affiliates**.



There are more than  
**2,500 employees** working  
for Sysmex Europe across  
the EMEA region.



Behind the name Sysmex is  
'systemisation in medicine'  
combined with 'x',  
representing the  
unlimited **growth factor**.

We are committed to  
a sustainable future, not only  
with regard to developing  
high-quality products with longevity,  
but also long-term sustainable  
energy and resource solutions.



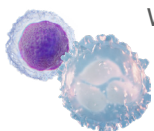
Our award-winning  
**Sysmex Academy** creates  
employee and customer  
trainings in over 14 languages.



Our European headquarters as  
well as multiple affiliate  
locations are consistently on the  
**Great Place to Work®** rankings.  
(2012, 2014, 2016, 2020, 2021)



Women currently make up  
**48.35%** of the  
Sysmex Europe workforce.



We may be known for routine haematology,  
but we are consistently growing  
in areas of life science, urinalysis,  
immunochemistry, haemostasis,  
flow cytometry and other emerging fields.

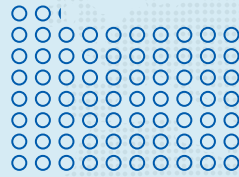
Our passion is creating combined  
solutions that are tailored to  
all kinds of laboratory needs,  
making **workflows** simpler  
and in the end, benefitting the patient.





**27.9%**

Net sales in EMEA\*



**72.1%**

Net sales in the rest of the world\*



- HAEMATOLOGY
- HAEMOSTASIS
- URINALYSIS
- FLOW CYTOMETRY
- IMMUNOCHEMISTRY
- LIFE SCIENCE
- CLINICAL CHEMISTRY
- OTHERS

## ● MILESTONES

- First haematology analyser brought to the market  
**1963**
- First reagents developed  
**1967**
- European headquarters established, TOA Medical Electronics (Deutschland) GmbH, presently Sysmex Europe SE  
**1980**
- First coagulation analyser brought to the market  
**1984**
- First immunochemical analyser brought to the market  
**1987**
- Completed construction of as the reagent production base for Europe, located in Neumünster, Germany  
**1993**
- First urinalysis analyser brought to the market in EMEA  
**1995**
- First clinical flow cytometer brought to the market  
**2022**
- 40 years of Sysmex in EMEA  
**2020**
- Expansion of the reagent production site in Neumünster, Germany  
**2015**
- Launched the XN-Series  
**2011**
- Established a German subsidiary, HITADO GmbH, specialising in the sales and support of POCT products  
**2010**
- Opening of customer training centre, Sysmex Academy  
**2009**
- Opened R&D Center Europe in Germany  
**2006**
- Developed genetic testing technology that can detect cancer cell metastasis in lymph nodes within 15 minutes  
**2002**