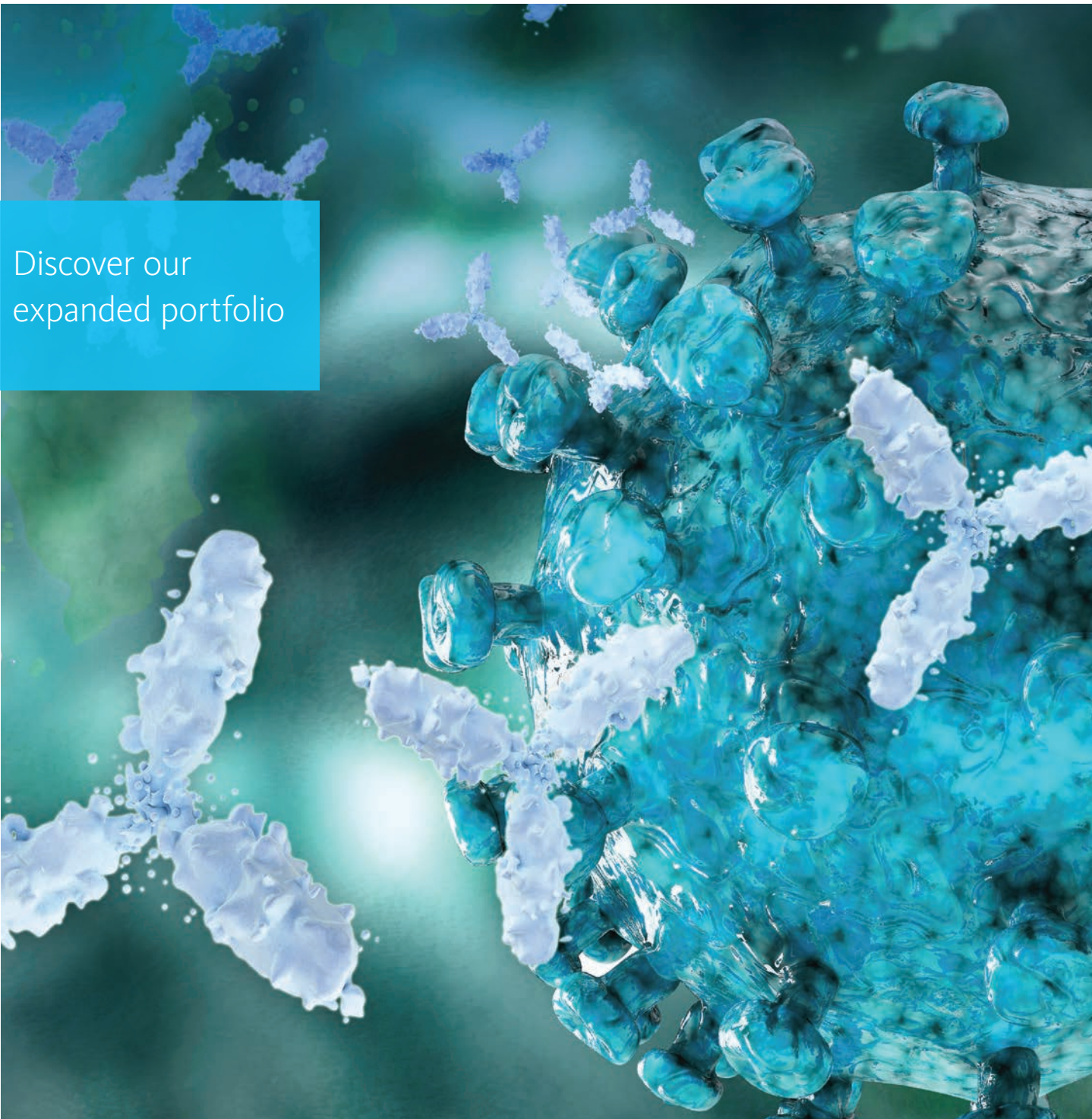


A new vision for flow cytometry

CyFlow™ CE IVD antibody reagents



Discover our
expanded portfolio

Sysmex is proud to introduce CyFlow CE IVD antibody reagents – high-quality monoclonal antibodies with exceptional stability

Distinctive separation between populations is a hallmark of the CyFlow antibody reagents.

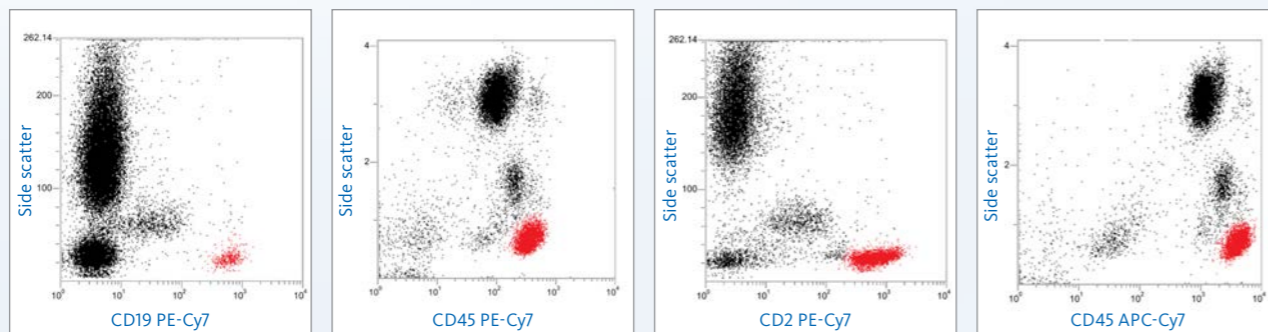


Fig. Human blood stained with CyFlow CE IVD antibodies and analysed by flow cytometry

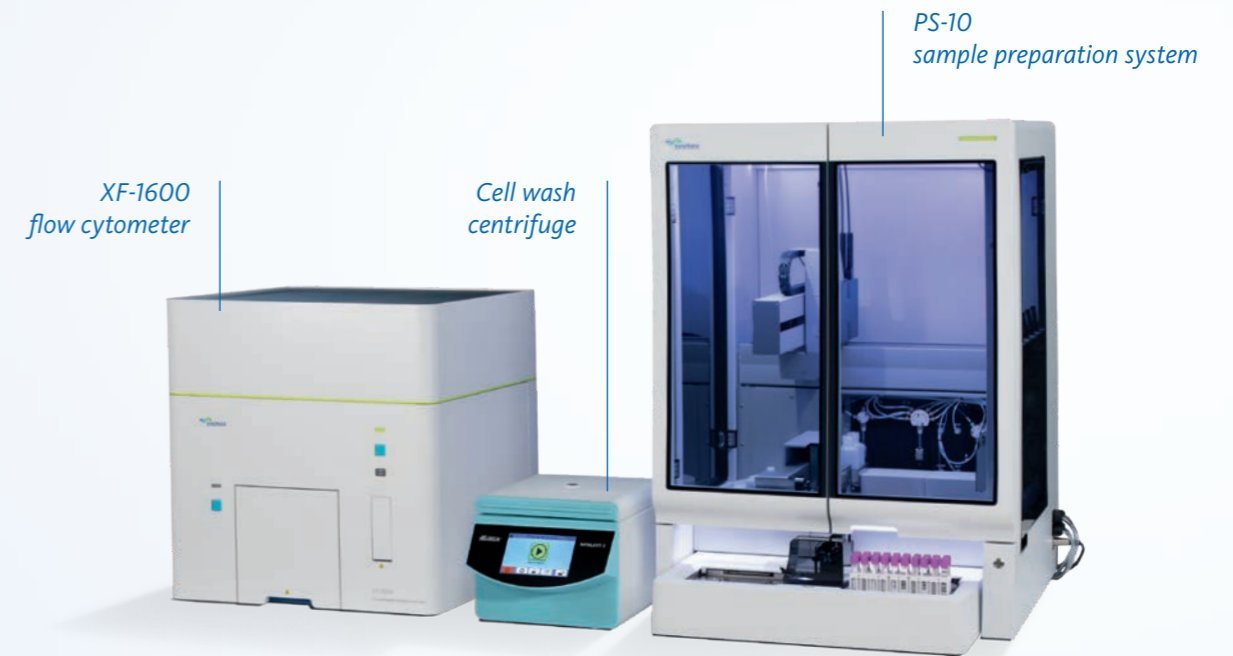
CyFlow CE IVD monoclonal antibody reagents





- Robust quality and high stain index
- Core markers for complex flow cytometry applications
- Ever-expanding selection of available specificities and fluorochrome conjugates
- Consistent test size for all fluorochromes
- 2D-barcoded labels compatible with PS-10 software
- Backed by Sysmex applications and scientific staff



Thoughtful automation for a new level of workflow efficiency

- Complete clinical flow cytometry solution, from sample preparation to data analysis
- Modular system – adapts to your workflow
- Full traceability of sample, QC and reagent data



			
Flexibility	Automation	Performance	Data management
Large portfolio of CyFlow CE IVD antibody reagents	PS-10 sample preparation and cocktail system Cell wash centrifuge	XF-1600 flow cytometer	Integrated software solutions

Contact your Sysmex representative today for more information.
In Europe, Middle East and Africa visit: www.sysmex-flowcytometry.com

These products might not yet be available for sale in all countries in EMEA.

Available Sysmex CyFlow CE IVD antibody reagents

Specificity	Clone	Violet (405 nm)		Blue (488 nm)							Red (638 nm)		
		Pacific Blue™ 455 nm	Pacific Orange™ 551 nm	FITC 518 nm	PE 576 nm	PE-DyLight™ 594 618 nm	PE-Cy5 670 nm	PerCP 678 nm	PerCP-Cy5.5 695 nm	PE-Cy7 785 nm	APC 660 nm	Alexa Fluor™ 700 723 nm	APC-Cy7 780 nm
CD2	LT2			BR722754	AC452932*					AB990933	AA403091*		
CD3	SK7									BL640854*			CA319811
CD3	UCHT1	AK695971		AV797318							CE971618	BX058859	
CD4	MEM-241	AQ089912		BA007898	BD784407				BA577933	BX257189	CP968485		BY136274
CD5	L17F12	CA236265		CG724580						CG087129	BU171249		
CD7	124-1D1			CZ270743	BU938470						AZ986277*		
CD8	MEM-31	CS018546	CX534105*	AG127200	BH172399			AP808917	AT936093		CS288863	AR388768*	
CD10	MEM-78			AD617746	AJ877308						BX871972		
CD13	WM15			AB098160	CT502658					BT401197	AU577404		
CD14	MEM-15			AB782713*	AY862475								
CD16	3G8		BA236813*	AY245075	AE270129			AV947886*			CU466269		
CD19	LT19				AF021857*				CF877878	CC335596	AM998972	CR683487*	
CD20	2H7	AM264349			AY330305*				CB759277	CN828372	BW169427		
CD22	S-HCL-1				BQ046886						AV294986		
CD23	EBVCS-5				CH050131*								
CD27	LT27	CH394723*		AN360580*	BR585512								
CD33	WM53			AT267917	CX661544				BC673282	CA614957	AE650325		
CD38	HIT2	BW615721		AP330388	CF116963								
CD41	MEM-06			BF107112	CC114568						BQ730509		
CD45	2D1	AS153983	BH922305*	BJ120977					AU344338	AV712880	CA655940		AY009470

*These products will be available in the EMEA region in May 2020.
The products listed may not be available for sale in all countries. Please contact your Sysmex representative for availability.

Available Sysmex CyFlow CE IVD antibody reagents

Specificity	Clone	Violet (405 nm)		Blue (488 nm)							Red (638 nm)		
		Pacific Blue™ 455 nm	Pacific Orange™ 551 nm	FITC 518 nm	PE 576 nm	PE-DyLight™ 594 618 nm	PE-Cy5 670 nm	PerCP 678 nm	PerCP-Cy5.5 695 nm	PE-Cy7 785 nm	APC 660 nm	Alexa Fluor™ 700 723 nm	APC-Cy7 780 nm
CD56	LT56				AH635614						CM100289		
CD61	VIPL2			CG217560									
CD79a	HM57				AK539319						CZ033810*		
CD103	Ber-ACT8			CD809213							BU255837*		
CD117	104D2				BH196546					BT878461			
CD123	6H6								BW792011*				
HLA-DR	L243	AW763553*		CW319535*	AC979380*								
Kappa-LC	TB28-2	BS915816		AM178679	AT447929						AM477465		
Lambda-LC	1-155-2			CJ674554	CE646079						AX500734		
MPO	MPO421-8B2			BD485396	BV366323*								

*These products will be available in the EMEA region in May 2020.
The products listed may not be available for sale in all countries. Please contact your Sysmex representative for availability.

Additional specificities and fluorochrome conjugates coming soon.

Visit our website to see the current list: www.sysmex-flowcytometry.com

There you will also find over 1000 RUO antibody reagents.

(For research use only, not for use in diagnostic or therapeutic procedures.)

Cy and CyDyes are trademarks of GE Healthcare. CyFlow™ is a trademark of Sysmex Partec GmbH. Pacific Blue™, Pacific Orange™, Alexa Fluor® and Dylight™ are trademarks of Life Technologies Corporation that authorizes the use of such intellectual property in connection with the purchased product solely for the purpose of providing human medical or diagnostic testing, analysis or screening services, including use for the purpose of guiding therapeutic strategy or determining outcome or providing clinical information or clinical analysis in return for compensation on a per-test basis, within the parameters set forth in the accompanying product literature. The transfer of this product is conditioned on the buyer not using this product for therapeutic or prophylactic purposes, for manufacture of another product, or any other purpose not expressly authorized. For information on purchasing a licence to this product for purposes other than as described above, contact Life Technologies Corporation, 5791 Van Allen Way, Carlsbad, CA 92008 USA or outlicensing@lifetech.com.

Distributor EMEA: Sysmex Europe GmbH

Bornbarch 1, 22848 Norderstedt, Germany · Phone +49 40 52726-0 · Fax +49 40 52726-100 · info@sysmex-europe.com · www.sysmex-europe.com

Manufacturer XF-1600 and PS-10: Sysmex Corporation

1-5-1 Wakinohama-Kaigandori, Chuo-ku, Kobe 651-0073, Japan · Phone +81 78 265-0500 · Fax +81 78 265-0524 · www.sysmex.co.jp

Manufacturer antibodies: Sysmex Partec GmbH

Am Flugplatz 13, 02828 Görlitz, Germany · Phone +49 3581 8746-0 · Fax +49 3581 8746-70 · info@sysmex-partec.com · www.sysmex-partec.com

Manufacturer centrifuge: Hettich AG

Seestrasse 204a · 8806 Bäch · Switzerland · www.hettich.ch

You will find your local Sysmex representative's address under www.sysmex-europe.com/contacts